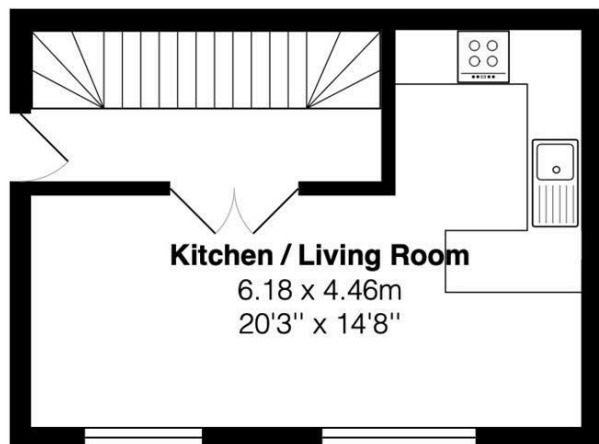




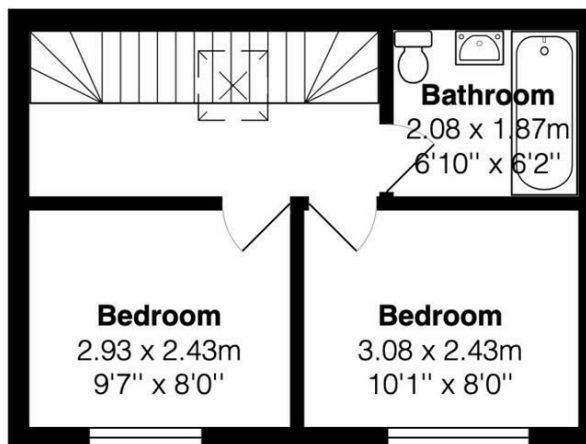
**2 Bed  
Maisonette  
located in**

**£230,000**





**First Floor**  
Area: 27.6 m<sup>2</sup> ... 297 ft<sup>2</sup>



**Second Floor**  
Area: 27.5 m<sup>2</sup> ... 296 ft<sup>2</sup>

Total Area: 55.1 m<sup>2</sup> ... 593 ft<sup>2</sup>

All measurements are approximate and for display purposes only

CONTACT

Kendrick Property Services - Brighton  
10-12 Lewes Road  
Brighton  
East Sussex  
BN2 3HP

E:  
sales@kendrickpropertyservices.co.uk  
T: 01273 600162  
www.kendrickpropertyservices.co.uk

Energy Efficiency Rating		
	Current	Potential
Very energy efficient - lower running costs		
(92 plus) <b>A</b>		
(81-91) <b>B</b>		
(69-80) <b>C</b>		
(55-68) <b>D</b>		
(39-54) <b>E</b>		
(21-38) <b>F</b>		
(1-20) <b>G</b>		
Not energy efficient - higher running costs		
<b>England &amp; Wales</b>	EU Directive 2002/91/EC	

